

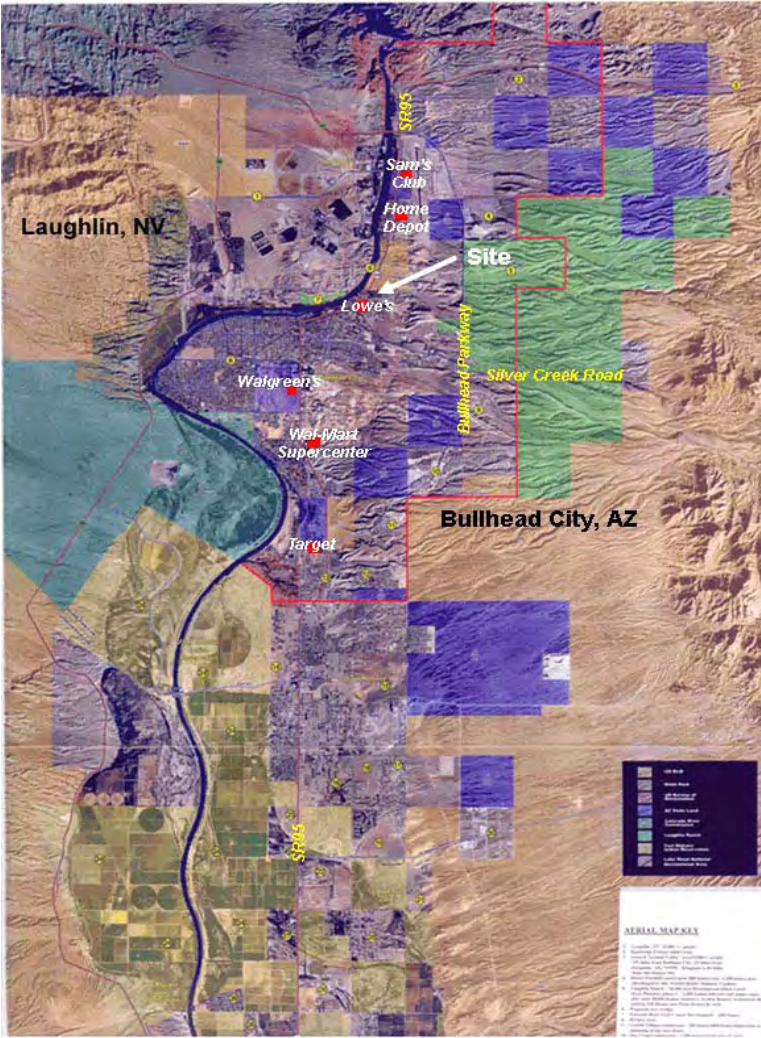


RETAIL SPACE AVAILABLE FOR LEASE

**1680 Highway 95
Bullhead City, Arizona**

2200 Forum Blvd.,
Suite 105
Columbia, Missouri 65203

www.malyrealty.com



**FOR MOR INFORMATION
PLEASE CONTACT**

ELIO KHALIFE
First American Investment, LLC
11 Northfield Lane
Prescott, AZ 86305
Office: (928) 541-1557
Fax: (928) 541-1561
Cell: (928) 201-5888
Email: eliokhalife@msn.com

MARC KIRCHHOFF
Maly Commercial Realty, Inc.
Broker-Officer
Phone (573) 443-3200
Fax (573)875-1286
Toll Free (888) 875-1332
Mobile (573) 489-5680
Email mkirchhoff@malyrealty.com

Retail opportunity anchored by Lowe's Home Centers on Highway 95.

DEMOGRAPHICS (2008)

	1 Miles	3 Miles	5 Miles
Population (2013 proj.)	5,565	34,712	50,185
Population (2008 est.)	4,817	31,768	45,094
Average HH Income	\$48,683	\$43,462	\$45,229
Growth (1990-2000)	67.69%	47.23%	52.91%

The information contained herein is for illustration only - dimensions are approximate only. This information is not to be reproduced or used for construction or permitting. The information contained within this brochure is believed to be accurate as of the date of input, however, Maly Commercial Realty, Inc., assumes no responsibility for the accuracy of the information provided.



COMMERCIAL REALTY, INC.

2200 Forum Blvd., Suite 105
Columbia, Missouri 65203

RETAIL SPACE AVAILABLE FOR LEASE

1680 Highway 95 Bullhead City, Arizona

www.malyrealty.com



The information contained herein is for illustration only - dimensions are approximate only. This information is not to be reproduced or used for construction or permitting. The information contained within this brochure is believed to be accurate as of the date of input, however, Maly Commercial Realty, Inc., assumes no responsibility for the accuracy of the information provided.